



PRODUCT CATALOGUE



4ESC AC/DC SOLAR BOREHOLE PUMP SERIES

4" AC/DC Solar Pump 4ESC5.2-255-300-2200

Applications

For water supply from boreholes

For domestic, garden and irrigation applications

Technical Data

Outlet Size : 1&1/4" (32mm)

Optimum AC Input Voltage :
85V – 280V (AC)

Optimum DC Input Voltage :
80V – 430V (DC)

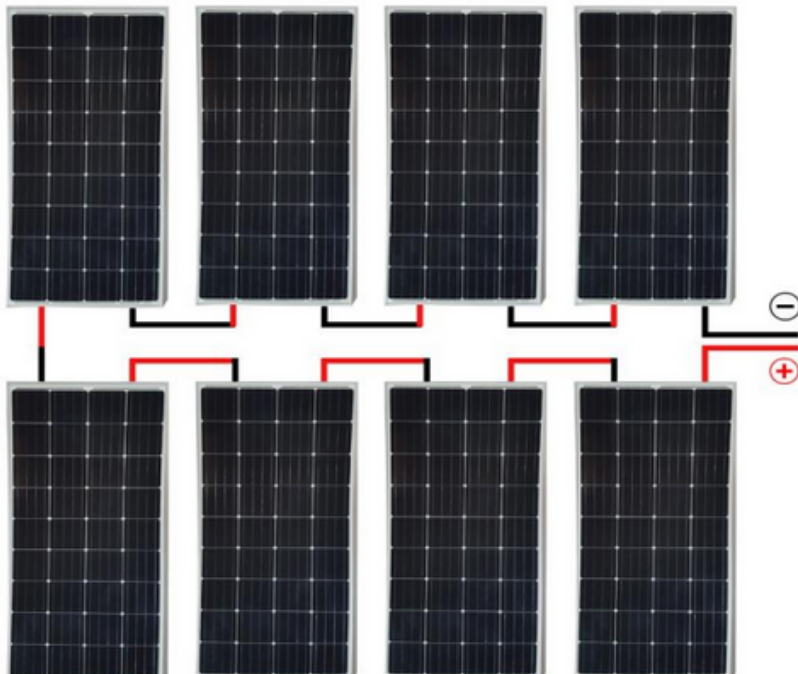
Open Circuit Voltage : <430V
Power : 1100W

Max Flow : 5.2m³/Hour

Max Head : 255m

Equip with solar Panels (not included)
only or Solar panels with battery (Not
included) or 220V AC Power

Warranty: 1 year
(According to our general
sales conditions)



Operating Conditions

Maximum fluid temperature
up to +35°C

Maximum sand content:
0.25%

Minimum well diameter: 4"
(100mm)

Automatic Inverter
control box included
Pumps are designed by
casing stressed NEMA
Dimension standards
Curve tolerance
according to ISO 9906

10 x 265W

Solar Panels

Max Power: 265W

S/O Current: 8.7A

O/C Voltage: 36.6V

Max power I = 7.68A

Max Power V = 30.6V

8 - 9 x 330W

Solar Panels

Max Power: 330W

S/O Current: 9.33A

O/C Voltage: 45.64V

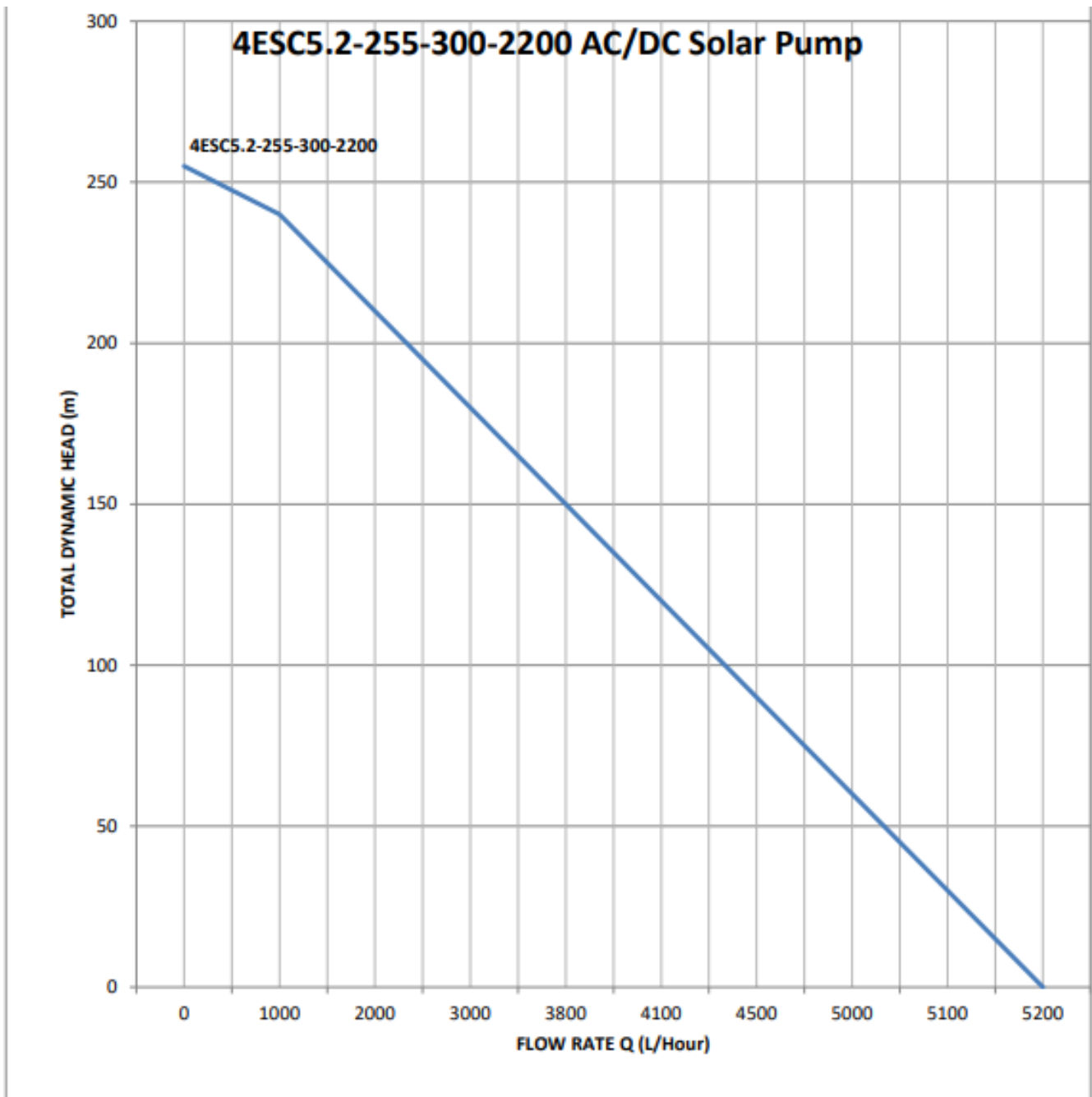
Max power I = 7.15A

Max Power V = 34.28V

Technical Data

Model	Motor Power		Delivery N @ 2850 r/min								
	KW	VOLTS	Q	M3/h	0	1	2	3	4.5	5	5.1
L/h				0	1000	2000	3000	4500	5000	5100	5200
4ESC5.2-255-300-2200	2.2	255	H(m)	255	240	210	180	90	60	30	0

Performance Curve



4" AC/DC Solar Pump 4ESC5.2-300-380/550-3000

Applications

For water supply from boreholes

For domestic, garden and irrigation applications

Technical Data

Outlet Size : 1&1/4" (32mm)

Optimum AC Input Voltage :
380V (AC)

Optimum DC Input Voltage :
480V – 750V (DC)

Open Circuit Voltage : <780V
Power : 3000W

Max Flow : 5.2m³/Hour

Max Head : 300m

Equip with solar Panels (not included) only or Solar panels with battery (Not included) or 220V AC Power

Warranty: 1 year
(According to our general sales conditions)

Operating Conditions

Maximum fluid temperature
up to +35°C

Maximum sand content:
0.25%

Minimum well diameter: 4"
(100mm)

Automatic Inverter control box included
Pumps are designed by casing stressed NEMA Dimension standards
Curve tolerance according to ISO 9906

15 x 265W

Solar Panels

Max Power: 265W

S/O Current: 8.7A

O/C Voltage: 36.6V

Max power I = 7.68A

Max Power V = 30.6V

12 x 330W

Solar Panels

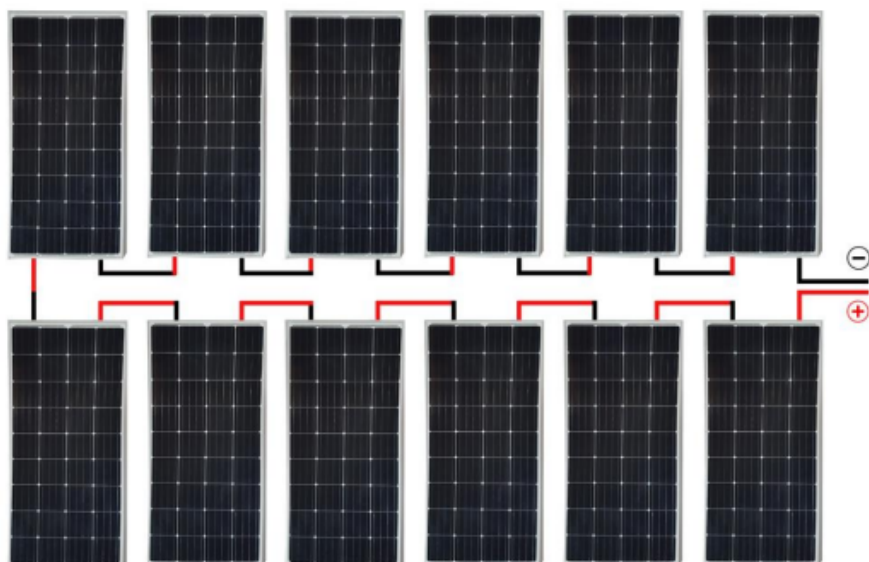
Max Power: 330W

S/O Current: 9.33A

O/C Voltage: 45.64V

Max power I = 7.15A

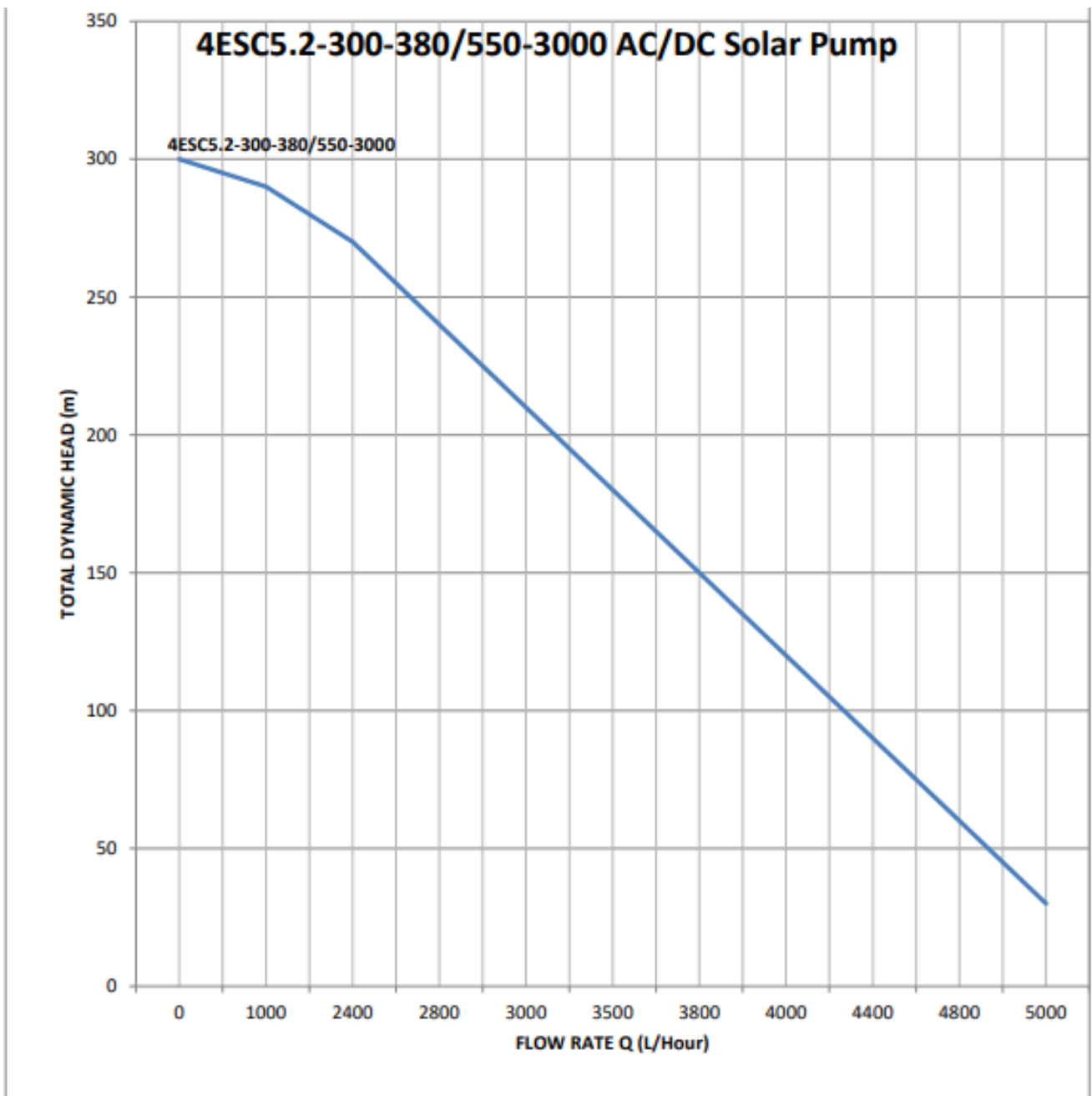
Max Power V = 34.28V



Technical Data

Model	Motor Power		Delivery N @ 2850 r/min									
	KW	VOLTS	Q	M3/h	0	1	2.8	3.5	4	4.4	4.8	5
4" AC/DC SOLAR					L/h	0	1000	2800	3500	4000	4400	4800
4ESC5.2-300-380/550-3000	3	550	H(m)		300	290	240	180	120	90	60	30

Performance Curve



4" AC/DC Solar Pump 4ESC19-135-380/550-4000

Applications

For water supply from boreholes

For domestic, garden and irrigation applications

Technical Data

Outlet Size : 1&1/4" (32mm)

Optimum AC Input Voltage :
380V (AC)

Optimum DC Input Voltage :
480V – 750V (DC)

Open Circuit Voltage : <780V
Power : 4000W

Max Flow : 19m³/Hour

Max Head : 135m

Equip with solar Panels (not included)
only or Solar panels with battery (Not
included) or 220V AC Power

Warranty: 1 year
(According to our general
sales conditions)

Operating Conditions

Maximum fluid temperature
up to +35°C

Maximum sand content:
0.25%

Minimum well diameter: 4"
(100mm)

Automatic Inverter
control box included
Pumps are designed by
casing stressed NEMA
Dimension standards
Curve tolerance
according to ISO 9906

19 x 265W

Solar Panels

Max Power: 265W

S/O Current: 8.7A

O/C Voltage: 36.6V

Max power I = 7.68A

Max Power V = 30.6V

14 x 330W

Solar Panels

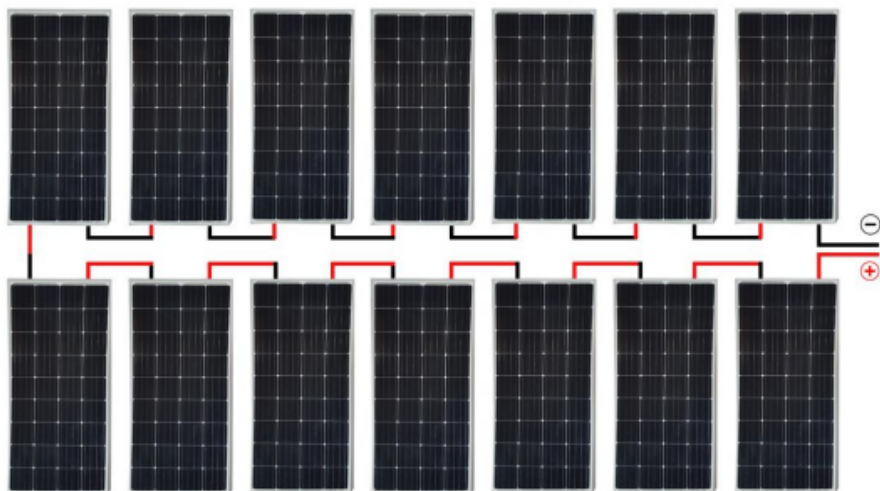
Max Power: 330W

S/O Current: 9.33A

O/C Voltage: 45.64V

Max power I = 7.15A

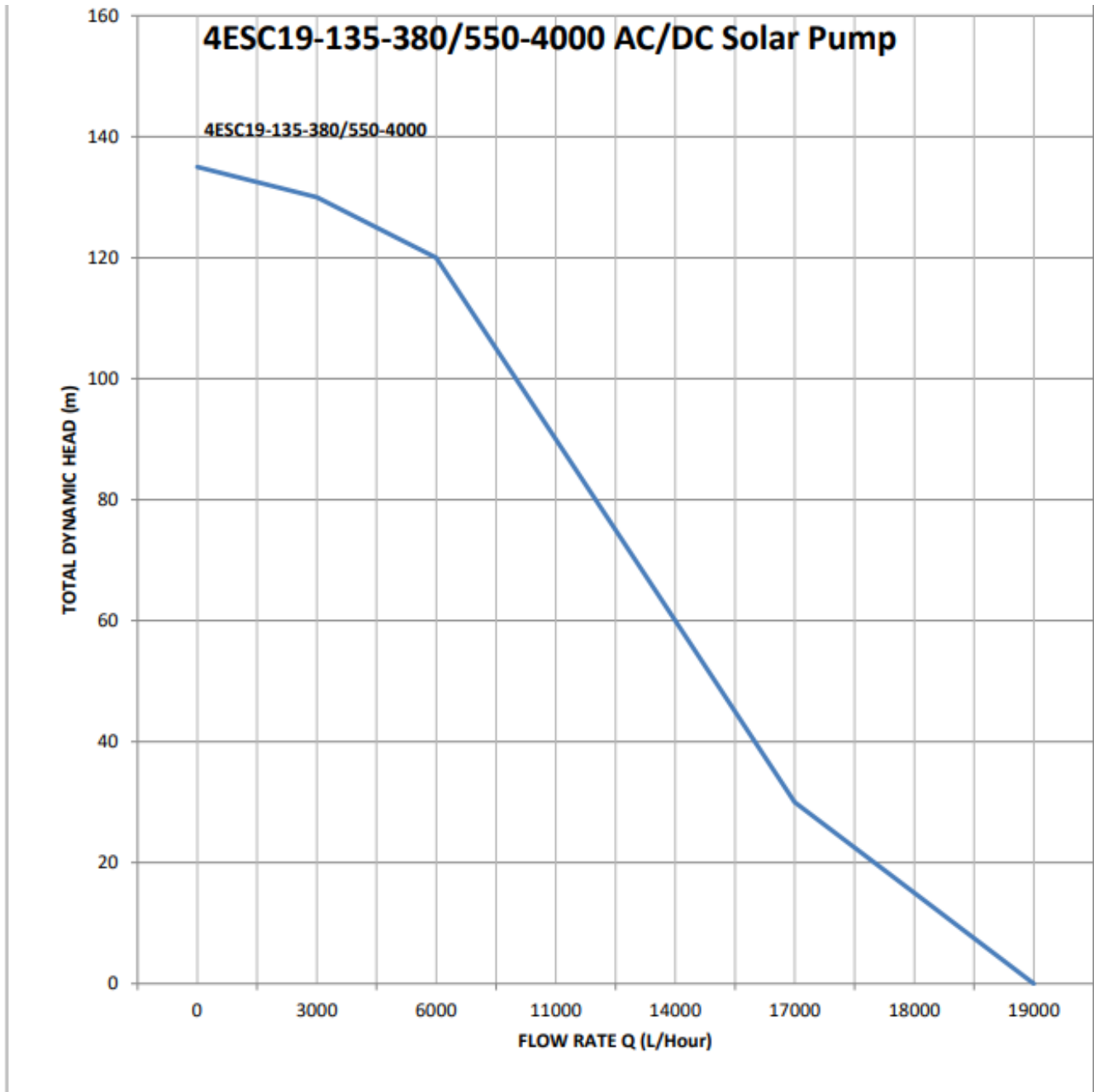
Max Power V = 34.28V



Technical Data

Model	Motor		Delivery N @ 2850 r/min									
4" AC/DC SOLAR	KW	VOLT	Q	M3/h	0	3	6	11	14	17	18	19
				L/h	0	3000	6000	11000	14000	17000	18000	19000
4ESC19-135-380/550-1300	4	550V	H(m)	135	130	120	90	60	30	15	0	

Performance Curve





The
WATER & SOLAR COMPANY
WATER & ENERGY SYSTEMS



+27 62 375 5088



+27 65 321 5803



<https://www.thewatersolarcompany.co.za/>



<https://maps.app.goo.gl/MBR2LMW3T6f9TtHV9>



<https://www.facebook.com/watersolarcompany>



<https://www.youtube.com/@TheWaterSolarCompany/>



<https://www.instagram.com/watersolarcompany2023/>