



The
WATER & SOLAR COMPANY
WATER & ENERGY SYSTEMS

4" ESC DC SOLAR BOREHOLE PUMP SERIES



PRODUCT CATALOGUE



4" DC Only Solar Pump 4ECS5.2-45-48-500

Applications

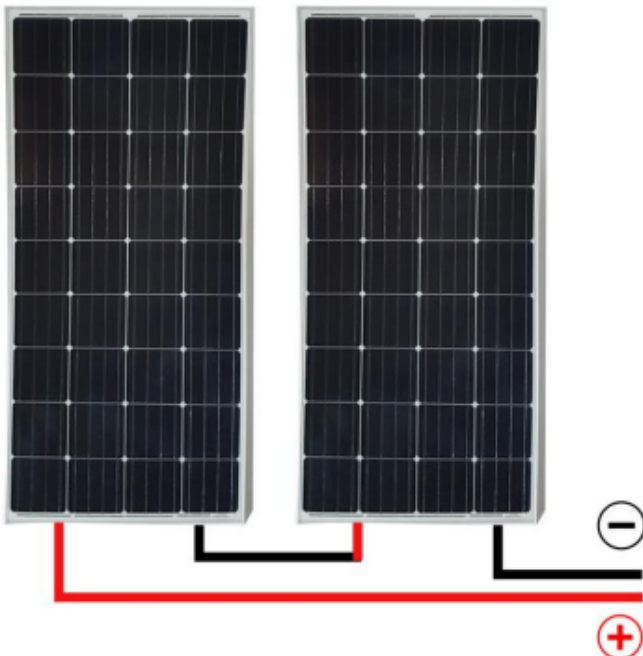
For water supply from boreholes
For domestic, garden and irrigation applications

Technical Data

Outlet Size : 1&1/4" (32mm)
Optimum Input Voltage :
60V – 90V (DC)
Open Circuit Voltage : <105V
Power : 500W
Max Flow : 5.2m³/Hour
Max Head : 45m

Equip with solar Panels (not included) only or Solar panels with battery (Not included)

Warranty: 1 year
(According to our general sales conditions)



Operating Conditions

Maximum fluid temperature
up to +35°C
Maximum sand content:
0.25%
Minimum well diameter: 4"
(100mm)

Automatic Inverter control box included
Pumps are designed by casing stressed NEMA Dimension standards
Curve tolerance according to ISO 9906

4 x 265W

Solar Panels

Max Power: 265W
S/O Current: 8.7A
O/C Voltage: 36.6V
Max power I = 7.68A
Max Power V = 30.6V

2 x 330W

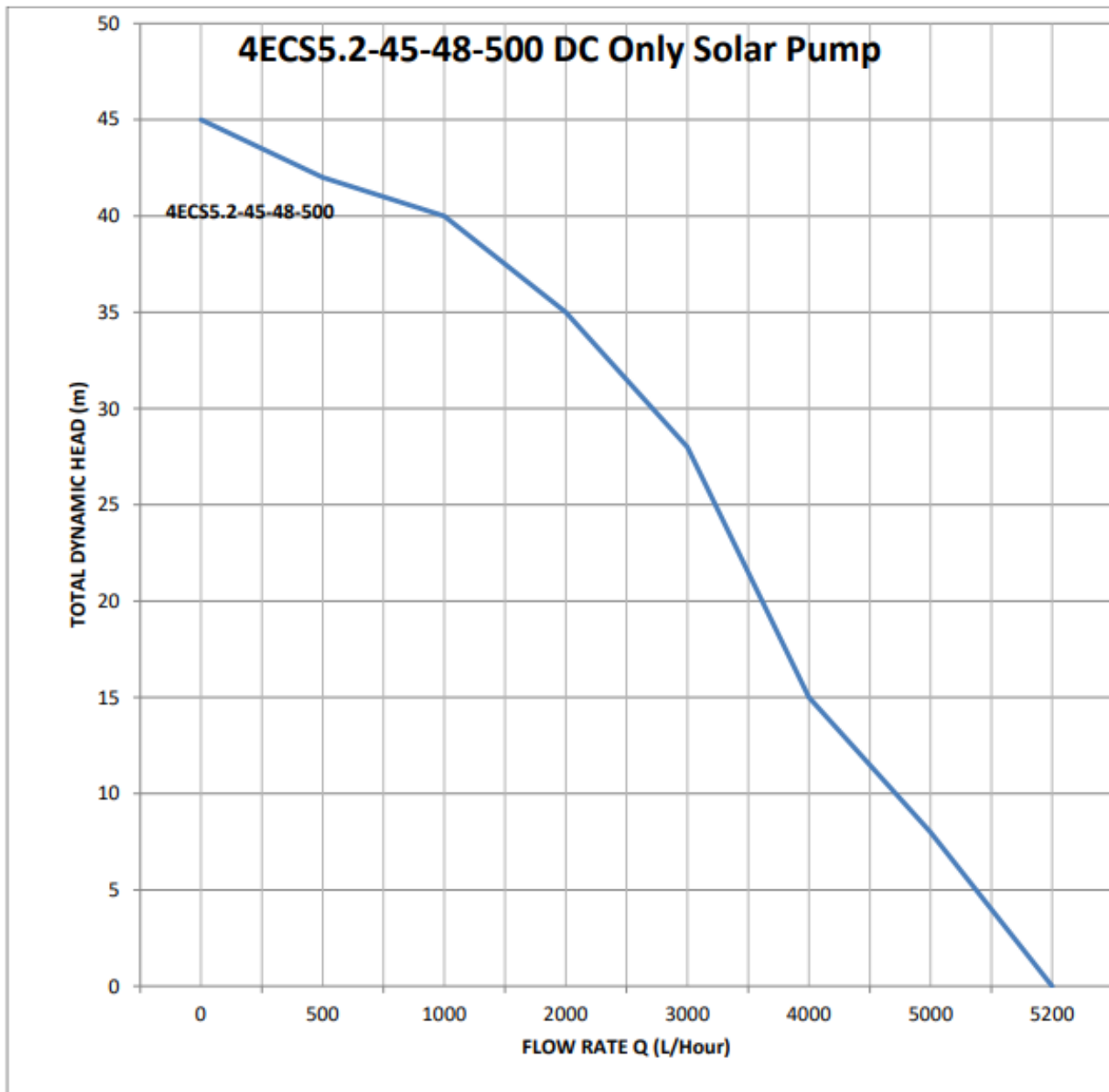
Solar Panels

Max Power: 330W
S/O Current: 9.33A
O/C Voltage: 45.64V
Max power I = 7.15A
Max Power V = 34.28V

Technical Data

Model	Motor Power		Delivery N @ 2850 r/min									
	KW	VOLTS	Q	M3/h L/h	0	0.5	1	2	3	4	5	5.2
4ECS5.2-45-48-500	0.5	48V	H(m)		45	42	40	35	28	15	8	0

Performance Curve



4" DC Only Solar Pump 4ECS5.2-67-48-750

Applications

For water supply from boreholes
For domestic, garden and irrigation applications

Technical Data

Outlet Size : 1&1/4" (32mm)

Optimum Input Voltage :
60V – 90V (DC)

Open Circuit Voltage : <105V

Power : 750W

Max Flow : 5.2m³/Hour

Max Head : 67m

Equip with solar Panels (not included) only or Solar panels with battery (Not included)

Warranty: 1 year
(According to our general sales conditions)

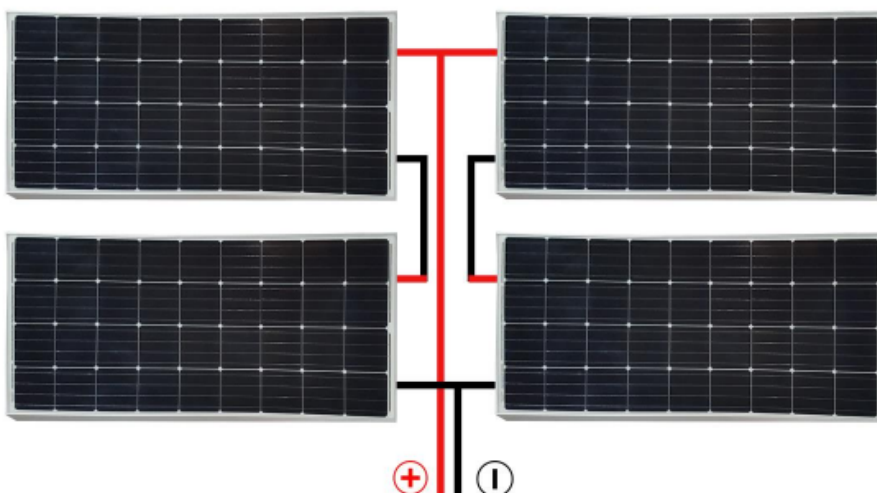
Operating Conditions

Maximum fluid temperature
up to +35°C

Maximum sand content:
0.25%

Minimum well diameter: 4"
(100mm)

Automatic Inverter control box included
Pumps are designed by casing stressed NEMA Dimension standards
Curve tolerance according to ISO 9906



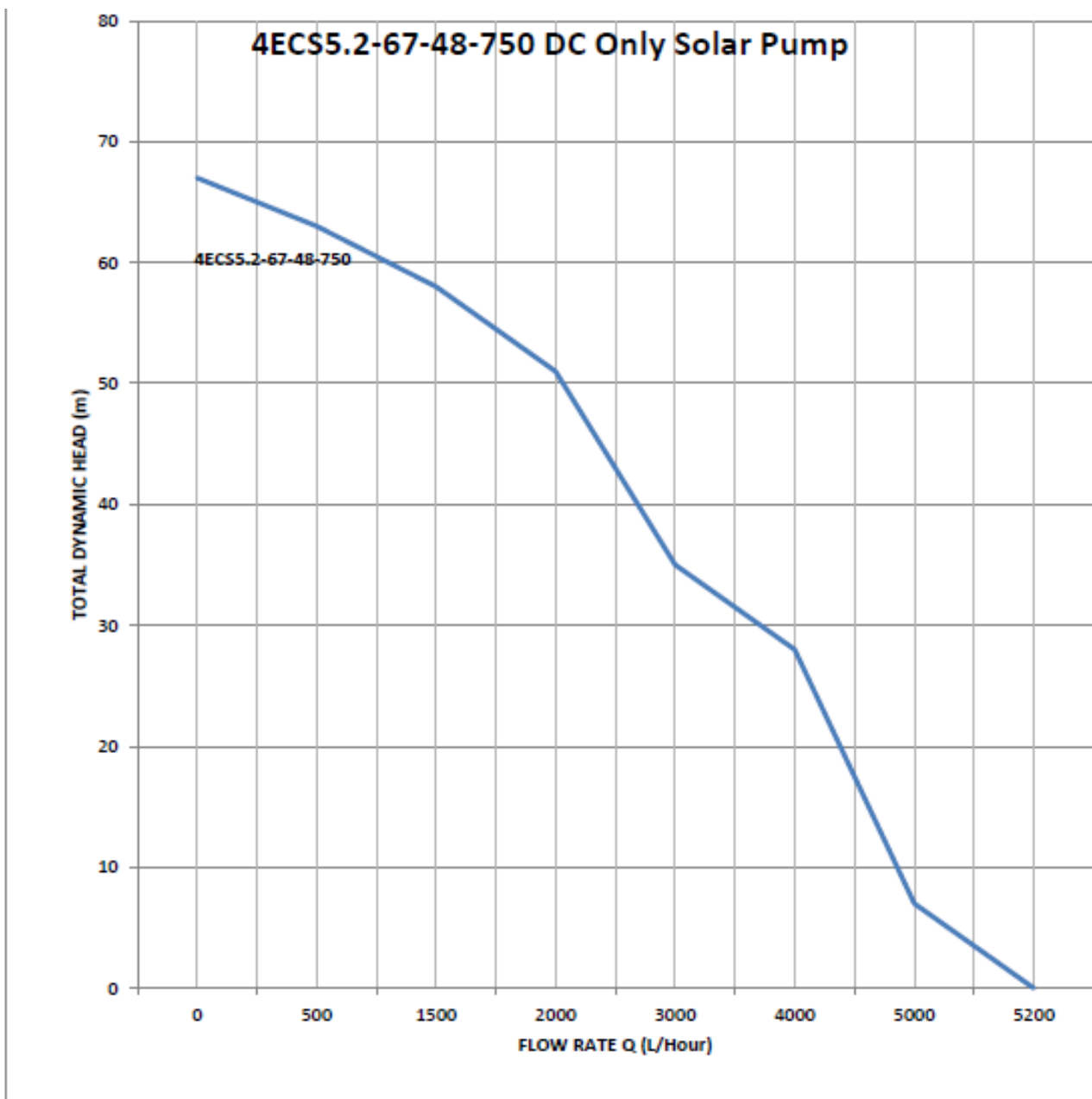
4 x 265W
Solar Panels
Max Power: 265W
S/O Current: 8.7A
O/C Voltage: 36.6V
Max power I = 7.68A
Max Power V = 30.6V

4 x 330W
Solar Panels
Max Power: 330W
S/O Current: 9.33A
O/C Voltage: 45.64V
Max power I = 7.15A
Max Power V = 34.28V

Technical Data

Model	Motor Power		Delivery N @ 2850 r/min									
	KW	VOLTS	Q	M3/h	0	0.5	1.5	2	3	4	5	5.2
4ECSS.2-67-48-750	0.75	48V	H(m)	L/h	0	500	1500	2000	3000	4000	5000	5200
					67	63	58	51	35	28	7	0

Performance Curve



4” DC Only Solar Pump 4ECS5.2-101-72-1100

Applications

For water supply from boreholes

For domestic, garden and irrigation applications

Technical Data

Outlet Size : 1&1/4” (32mm)

Optimum Input Voltage :
90V – 120V (DC)

Open Circuit Voltage : <160V

Power : 1100W

Max Flow : 5.2m³/Hour

Max Head : 101m

Equip with solar Panels (not included) only or Solar panels with battery (Not included)

Warranty: 1 year
(According to our general sales conditions)

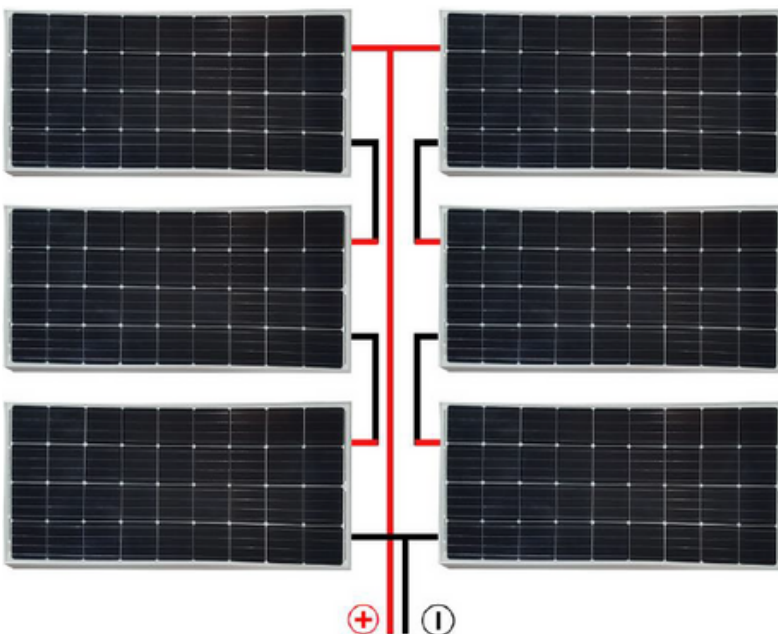
Operating Conditions

Maximum fluid temperature
up to +35°C

Maximum sand content:
0.25%

Minimum well diameter: 4”
(100mm)

Automatic Inverter control box included
Pumps are designed by casing stressed NEMA Dimension standards
Curve tolerance according to ISO 9906



6 x 265W

Solar Panels

Max Power: 265W

S/O Current: 8.7A

O/C Voltage: 36.6V

Max power I = 7.68A

Max Power V = 30.6V

6 x 330W

Solar Panels

Max Power: 330W

S/O Current: 9.33A

O/C Voltage: 45.64V

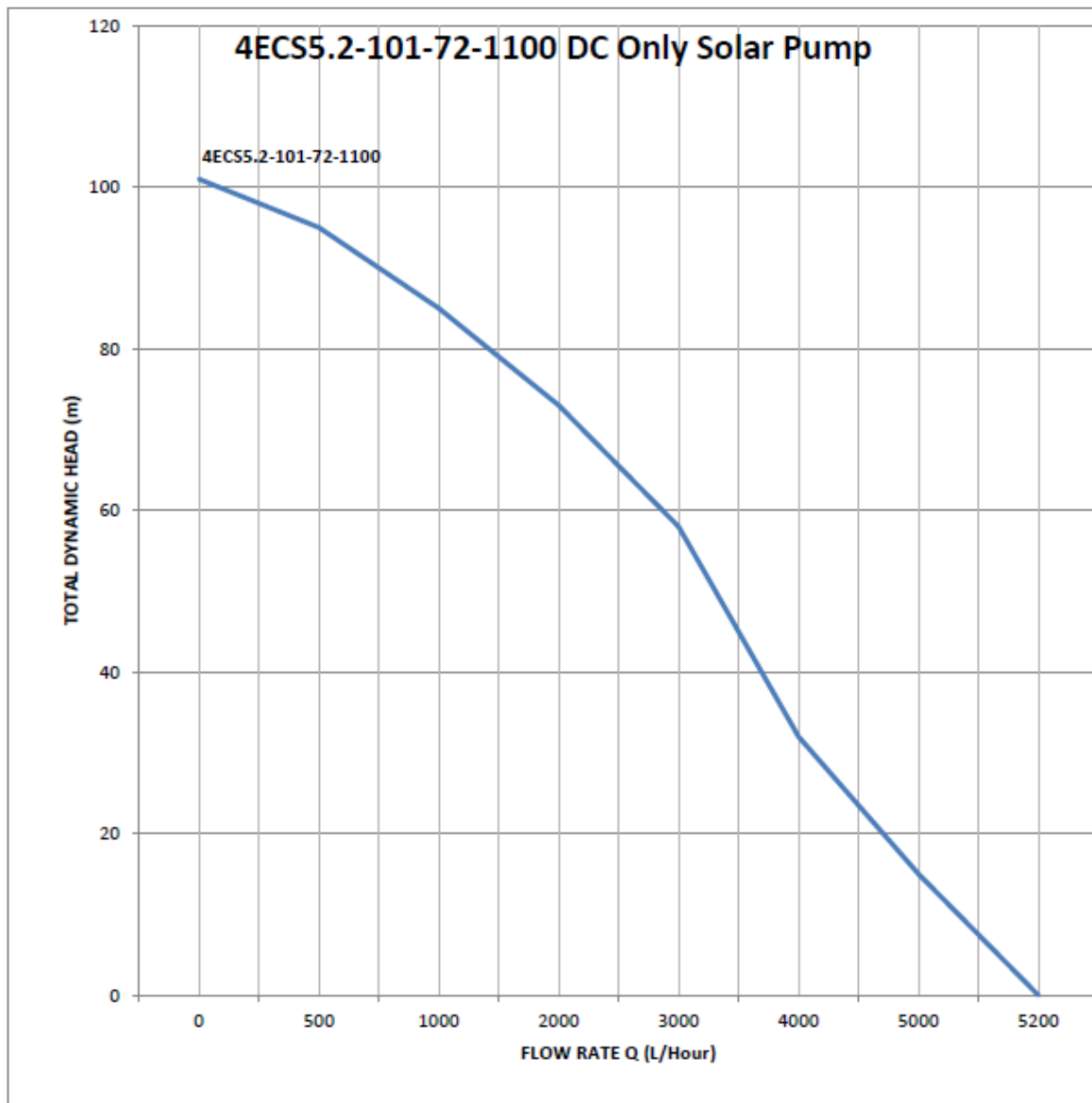
Max power I = 7.15A

Max Power V = 34.28V

Technical Data

Model	Motor Power		Delivery N @ 2850 r/min									
	KW	VOLTS	Q	M ³ /h	0	0.5	1	2	3	4	5	5.2
4" DC SOLAR				L/h	0	500	1000	2000	3000	4000	5000	5200
4ECS5.2-101-72-1100	1.1	72V	H(m)		101	95	85	73	58	32	15	0

Performance Curve



4" DC Only Solar Pump 4ECS4.8-203-110-1500

Applications

For water supply from boreholes
For domestic, garden and irrigation applications

Technical Data

Outlet Size : 1&1/4" (32mm)
Optimum Input Voltage :
110V – 150V (DC)
Open Circuit Voltage : <210V
Power : 1500W
Max Flow : 4.5m³/Hour
Max Head : 203m

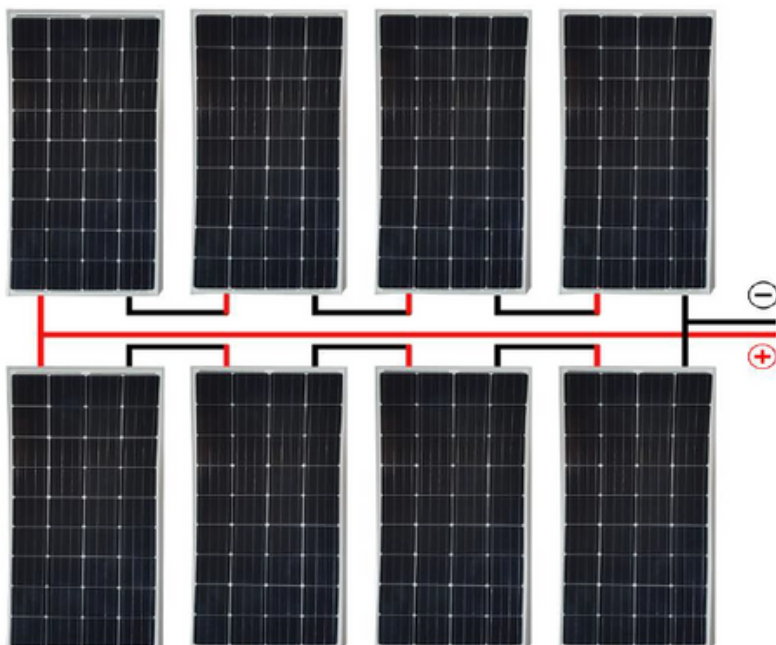
Operating Conditions

Maximum fluid temperature
up to +35°C
Maximum sand content:
0.25%
Minimum well diameter: 4"
(100mm)

Equip with solar Panels (not included) only or Solar panels with battery (Not included)

Warranty: 1 year
(According to our general sales conditions)

Automatic Inverter control box included
Pumps are designed by casing stressed NEMA Dimension standards
Curve tolerance according to ISO 9906



8 x 265W

Solar Panels

Max Power: 265W
S/O Current: 8.7A
O/C Voltage: 36.6V
Max power I = 7.68A
Max Power V = 30.6V

8 x 330W

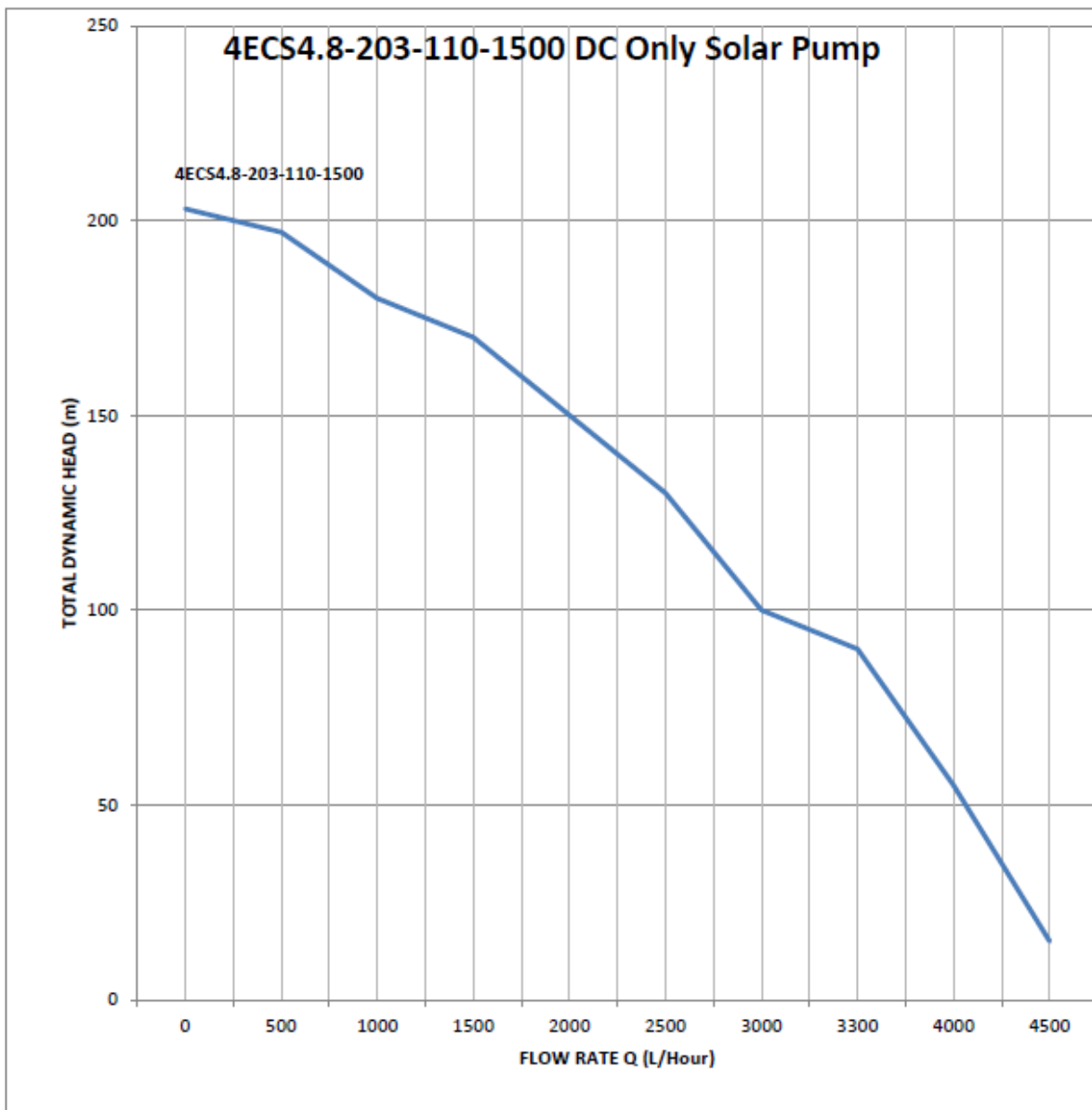
Solar Panels

Max Power: 330W
S/O Current: 9.33A
O/C Voltage: 45.64V
Max power I = 7.15A
Max Power V = 34.28V

Technical Data

Model	Motor Power		Delivery N @ 2850 r/min									
	KW	VOLTS	Q	M3/h	0	0.5	1	1.5	2	3	4	4.5
4" DC SOLAR				L/h	0	500	1000	1500	2000	3000	4000	4500
4ECS4.8-203-110-1500	1.5	110V	H(m)		203	197	180	170	150	100	55	15

Performance Curve





WATER & SOLAR COMPANY
WATER & ENERGY SYSTEMS



+27 62 375 5088



+27 65 321 5803



<https://www.thewatersolarcompany.co.za/>



<https://maps.app.goo.gl/MBR2LMW3T6f9TtHV9>



<https://www.facebook.com/watersolarcompany>



<https://www.youtube.com/@TheWaterSolarCompany/>



<https://www.instagram.com/watersolarcompany2023/>