



*The*  
**WATER & SOLAR COMPANY**  
WATER & ENERGY SYSTEMS

# LEO EVP PUMP

## *Catalogue*



# APPLICATION

- **WATER SUPPLY: PRESSURE BOOSTING FOR MAIN PIPES & HIGH- RISE BUILDINGS**
- **INDUSTRIAL PRESSURE BOOSTING: WATER SYSTEM, CLEANING SYSTEMS, HIGH PRESSURE WASHING SYSTEM & FIRE FIGHTING SYSTEM**
- **PRESSURE BOOSTING FOR PRESSURE TANK, SPRINKLING IRRIGATION & TRICHLING IRRIGATION**
- **AIR CONDITIONER, COOLING SYSTEM & INDUSTRIAL CLEANING**

# FEATURES

- **APPLICABLE FOR A WIDE SCOPE OF DIFFERENT TEMPERATURES, FLOW RATES & PRESSURE RANGES**
- **WATER INLET & OUTLET CAN BE ROTATED FOR PROPER ASSEMBLY IN ACCORDANCE WITH INSTALLATION REQUIREMENT**
- **EASY INSTALLATION & MAINTENANCE**
- **ADVANCED HYDRAULIC DESIGN, FEATURING STABLE OPERATION & HIGH EFFICIENCY**
- **CAST IRON WATER INLET & OUTLET WITH SPECIAL ANTI-RUST TREATMENT**
- **HIGH STRENGTH ENGINEERING PLASTIC FLOW PASSAGE COMPONENTS**
- **RELIABLE STAINLESS STEEL WELDED SHAFT**

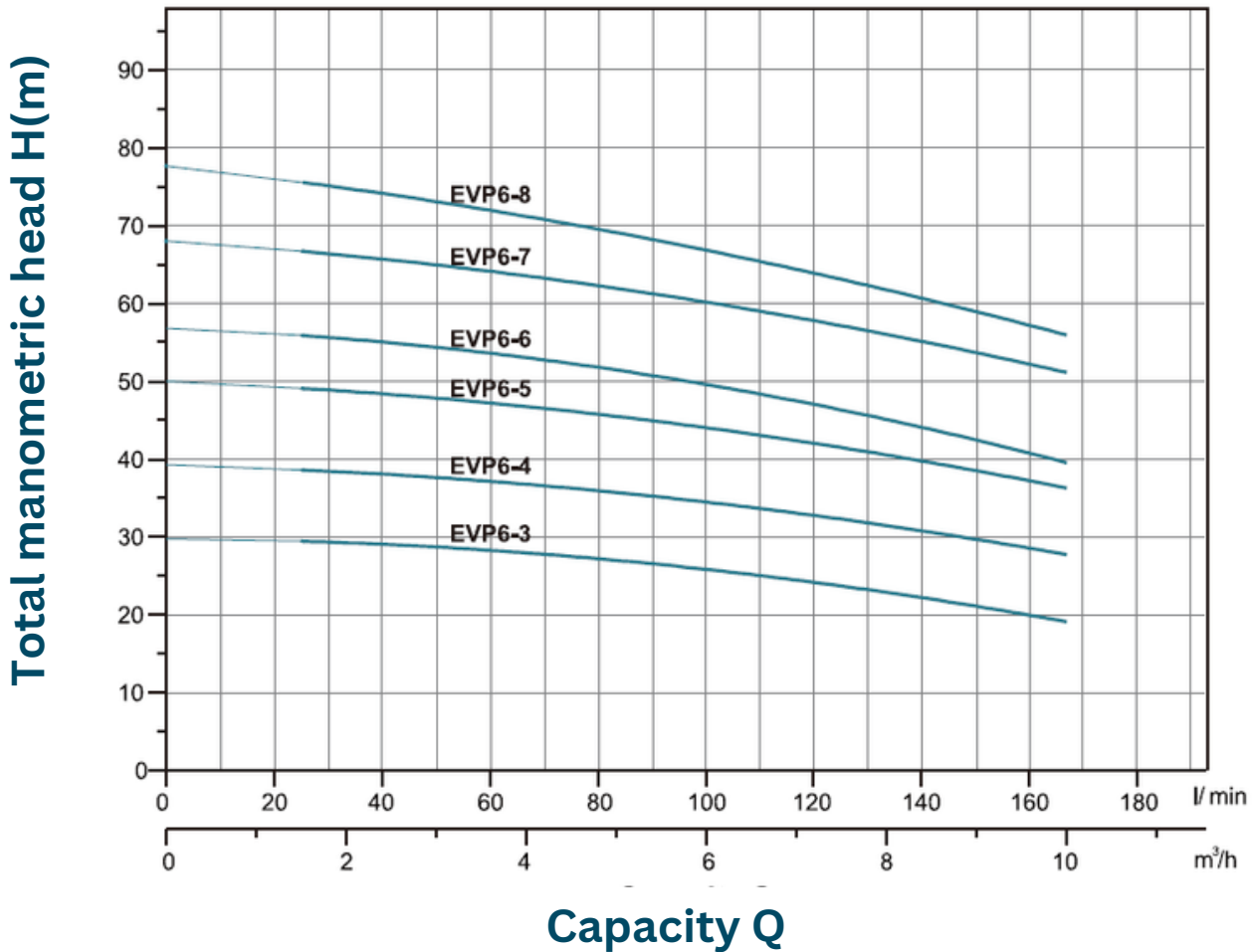
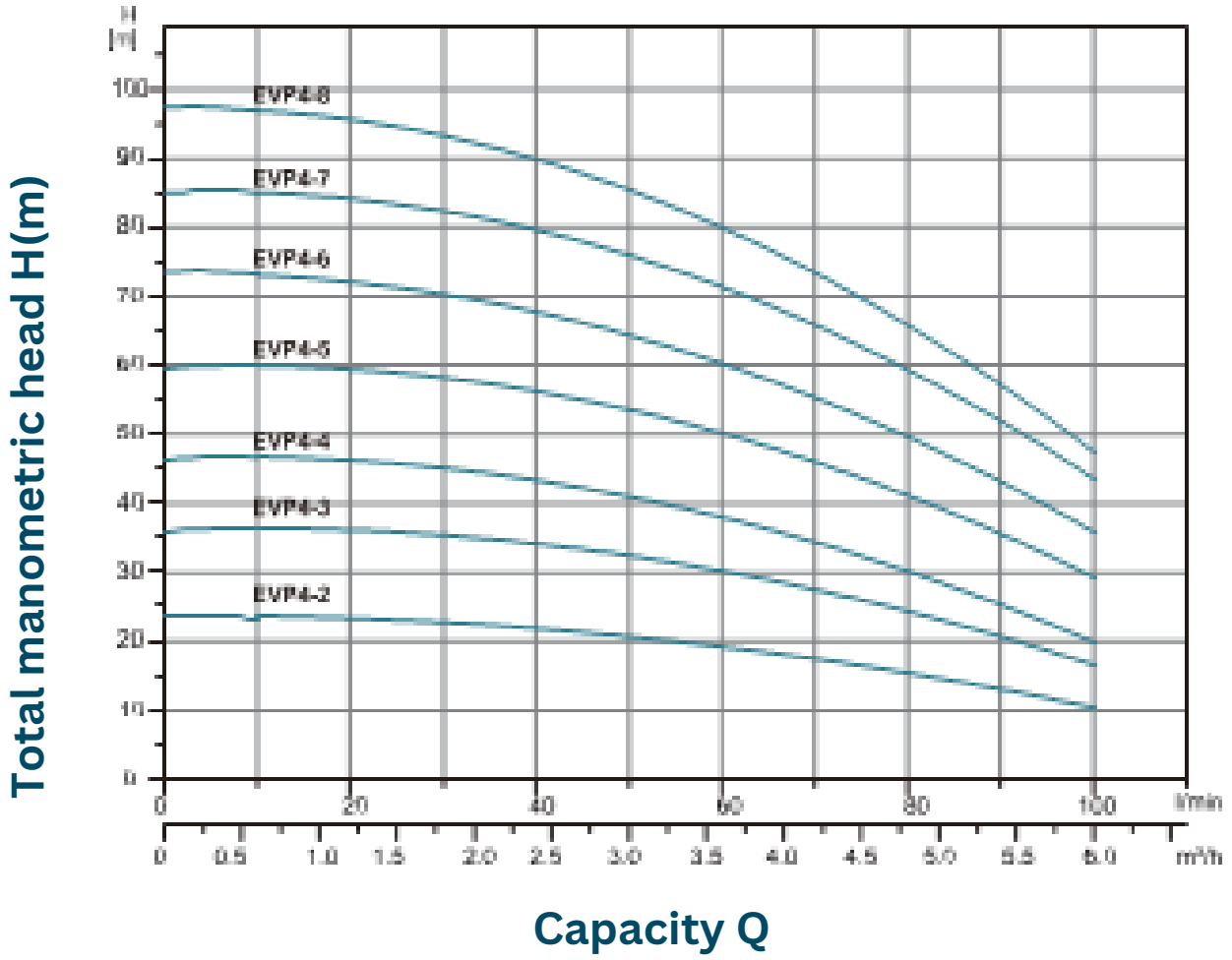
# WORKING CONDITIONS

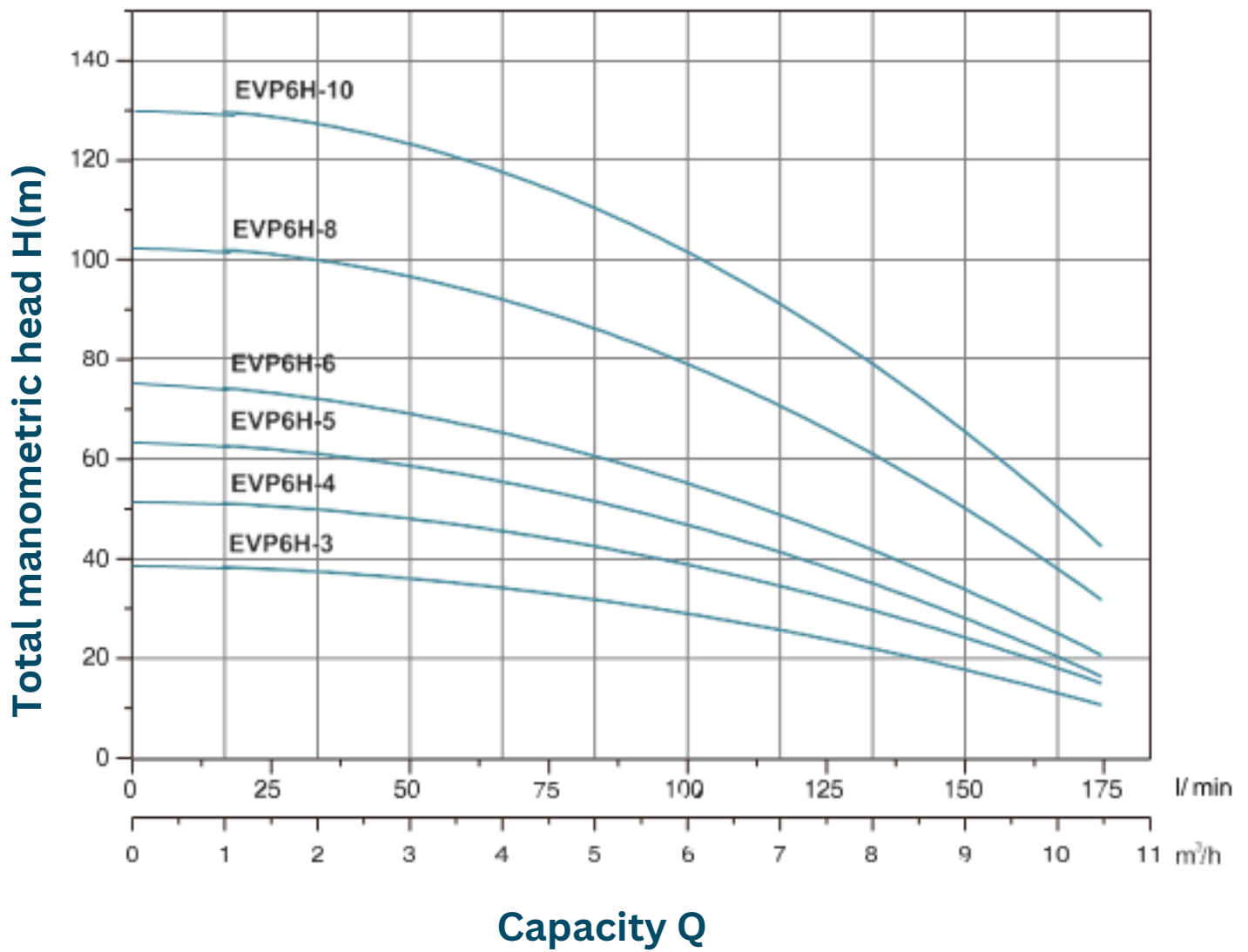
- **LIQUID TEMPERATURE: +5'C - 60'C**
- **MAXIMUM AMBIENT TEMPERATURE: +40'C**
- **MAXIMUM PRESSURE: 15 BAR**
- **ALTITUDE: UP TO 1000M**

# MODEL SELECTION INSTRUCTION

- **VOLTAGE & FREQUENCY: SINGLE-PHASE 220 - 240V/50HZ  
THREE- PHASE 380 - 415V/50HZ**

# HYDRAYLIC PERFORMANCE CURVES





## TECHNICAL DATA

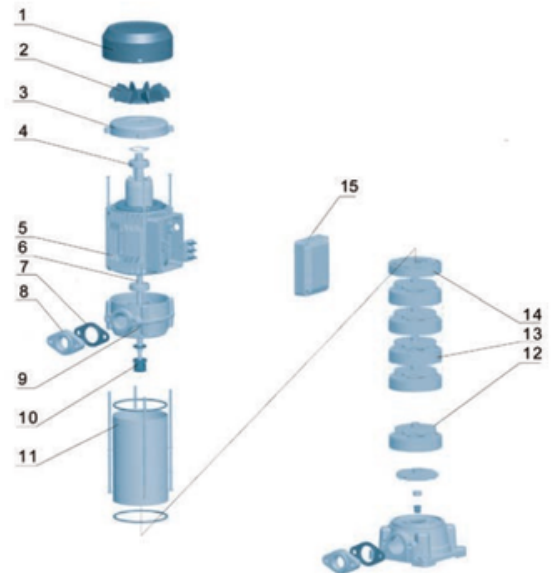
Model		Power (P2)		Q (m <sup>3</sup> /h)	0	1	2	3	4	5	6
Single-phase	Three-phase	kW	HP	Q (l/min)	0	16.7	33.3	50	66.7	83.3	100
EVPm4-2	EVP4-2	0.55	0.75	<b>H (m)</b>	24	23	22	21	18	15	10
EVPm4-3	EVP4-3	0.75	1.0		37	36	34	33	29	24	16
EVPm4-4	EVP4-4	1.0	1.3		47	46	45	41	36	28	20
EVPm4-5	EVP4-5	1.5	2.0		61	58	57	55	48	39	29
EVPm4-6	EVP4-6	1.5	2.0		74	72	69	66	57	47	36
—	EVP4-7	2.2	3.0		86	83	81	77	68	57	43
—	EVP4-8	2.2	3.0		98	95	92	86	76	63	47

Model		Power (P2)		Q (m <sup>3</sup> /h)	0	1	2	3	4	5	6	7	8	9	10
Single-phase	Three-phase	kW	HP	Q (l/min)	0	16.7	33.3	50	66.7	83.3	100	116.7	133.3	150	166.7
EVPm6-3	EVP6-3	1.1	1.5	H (m)	30	29.5	29	28.5	28	27	26	24.5	23	21	19
EVPm6-4	EVP6-4	1.5	2.0		40	38.5	37.5	37.3	37	36	34	33.5	32	30	27
—	EVP6-5	2.2	3.0		50	49	48.5	48.3	48	45	43	42	41	39	36
—	EVP6-6	2.2	3.0		58	56	54	53.5	53	52	51	48	45	41	40
—	EVP6-7	3.0	4.0		68	67	66.5	65	63.5	62	60	58	56	54	51
—	EVP6-8	3.0	4.0		78	75	73	72	71	70	68	65	62	59	55

Model		Power (P2)		Q (m <sup>3</sup> /h)	0	1	2	3	4.5	6	7.5	9	10.5
Single-phase	Three-phase	kW	HP	Q (l/min)	0	16.7	33.3	50	70	100	125	150	175
EVPm6H-3	EVP6H-3	1.1	1.5	H (m)	39	38	37	35	33	29	24	18	10
EVPm6H-4	EVP6H-4	1.5	2		52	51	49	47	44	39	32	25	14
EVPm6H-5	EVP6H-5	1.8	2.5		64	62	60	58	54	47	38	28	16
—	EVP6H-6	2.2	3		76	74	71	68	63	56	45	34	20
—	EVP6H-8	3.0	4		103	100	97	95	90	80	66	50	31
—	EVP6H-10	4.0	5.5		130	127	124	121	114	103	86	66	41

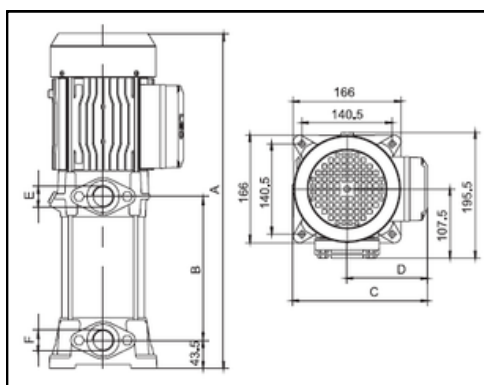
## MATERIALS TABLE

No.	Part	Material
1	Fan cover	08F
2	Fan	PP
3	End plate	Cast Iron
4	Bearing	
5	Stator	
6	Rotor	
7	Gasket	Rubber
8	Flange	Cast Iron
9	Motor Bracket	Aluminum
10	Mechanical seal	
11	Pump Barrel	AISI 304
12	Impeller	Plastic
13	Diffuser	Plastic
14	Last Diffuser	Plastic
15	Capactor box	Plastic

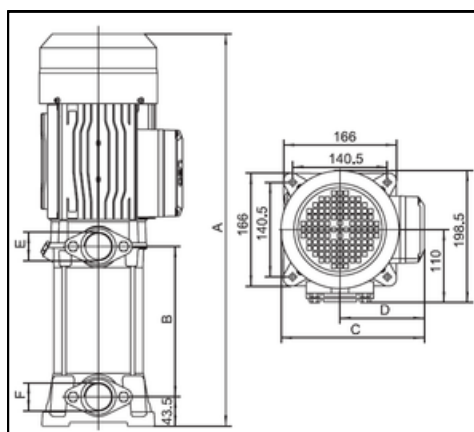


# DIMENSIONS

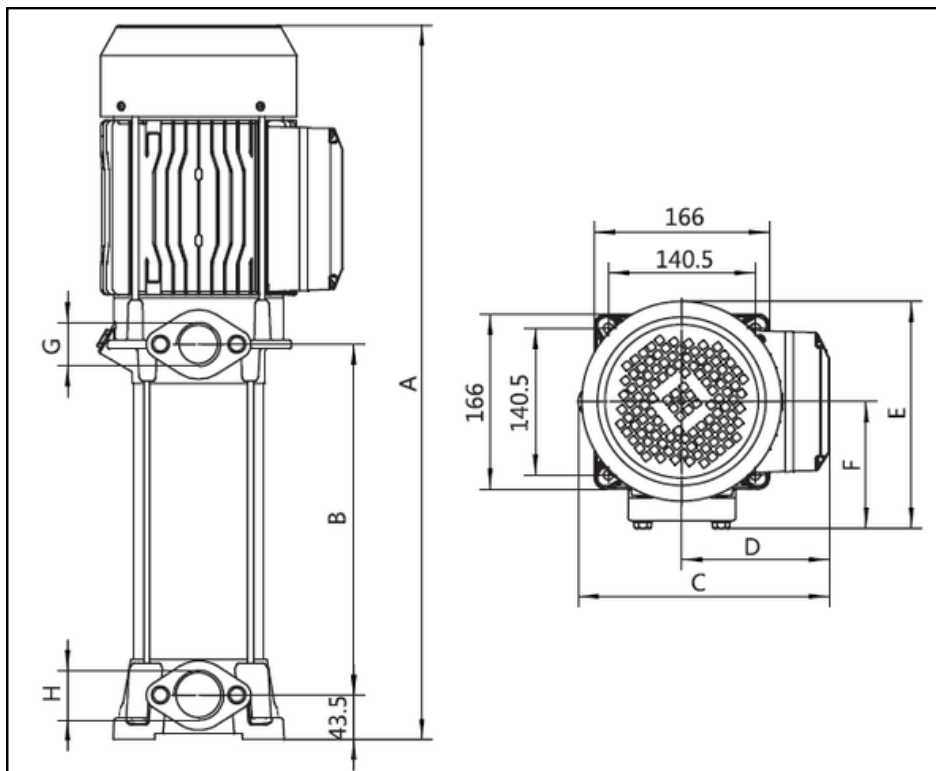
Model		Power (P2) kW	A	B	C	D	E	F
Single-phase	Three-phase							
EVPm4-2	EVP4-2	0.55	382	120	193	110	G1	G1
EVPm4-3	EVP4-3	0.75	406	144	193	110	G1	G1
EVPm4-4	EVP4-4	1.0	430	168	193	110	G1	G1
EVPm4-5	EVP4-5	1.5	497	199.5	210	125	G1	G1
EVPm4-6	EVP4-6	1.5	521	223.5	210	125	G1	G1
—	EVP4-7	2.2	545	247.5	210	125	G1	G1
—	EVP4-8	2.2	569	271.5	210	125	G1	G1



Model		Power (P2) kW	A	B	C	D	E	F
Single-phase	Three-phase							
EVPm6-3	EVP6-3	1.1	487	190	210	125	G1½	G1½
EVPm6-4	EVP6-4	1.5	524	227	210	125	G1½	G1½
—	EVP6-5	2.2	561	264	210	125	G1½	G1½
—	EVP6-6	2.2	598	301	210	125	G1½	G1½
—	EVP6-7	3.0	685	338	221	134	G1½	G1½
—	EVP6-8	3.0	722	375	221	134	G1½	G1½



Model		P2(kW)	A	B	C	D	E	F	G	H
Single-phase	Three-phase									
EVPm6H-3	EVP6H-3	1.1	457	158.5	210	125	202	114.5	G1¼	G1½
EVPm6H-4	EVP6H-4	1.5	483.5	185	210	125	202	114.5	G1¼	G1½
EVPm6H-5	EVP6H-5	1.8	510	211.5	210	125	202	114.5	G1¼	G1½
—	EVP6H-6	2.2	536.5	238	210	125	202	114.5	G1¼	G1½
—	EVP6H-8	3.0	655	297.5	240	141	218	121.5	G1¼	G1½
—	EVP6H-10	4.0	708	350.5	240	141	218	121.5	G1¼	G1½





**+27 62 375 5088**



**+27 65 321 5803**



**<https://www.thewatersolarcompany.co.za/>**



**<https://maps.app.goo.gl/MBR2LMW3T6f9TtHV9>**



**<https://www.facebook.com/watersolarcompany>**



**<https://www.youtube.com/@TheWaterSolarCompany/>**



**<https://www.instagram.com/watersolarcompany2023/>**