

# LEO LKS PUMP



*Product  
Catalogue*

# Application

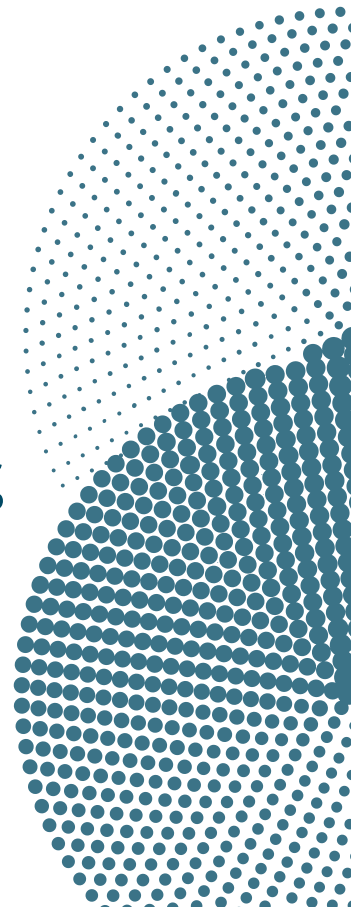
- Can be used to transfer clean or slightly dirty water or other liquids similar to water in physical & chemical properties
- Suitable to be immersed in water for lifting water from the well or the pool, & draining water from the basement

# Pump

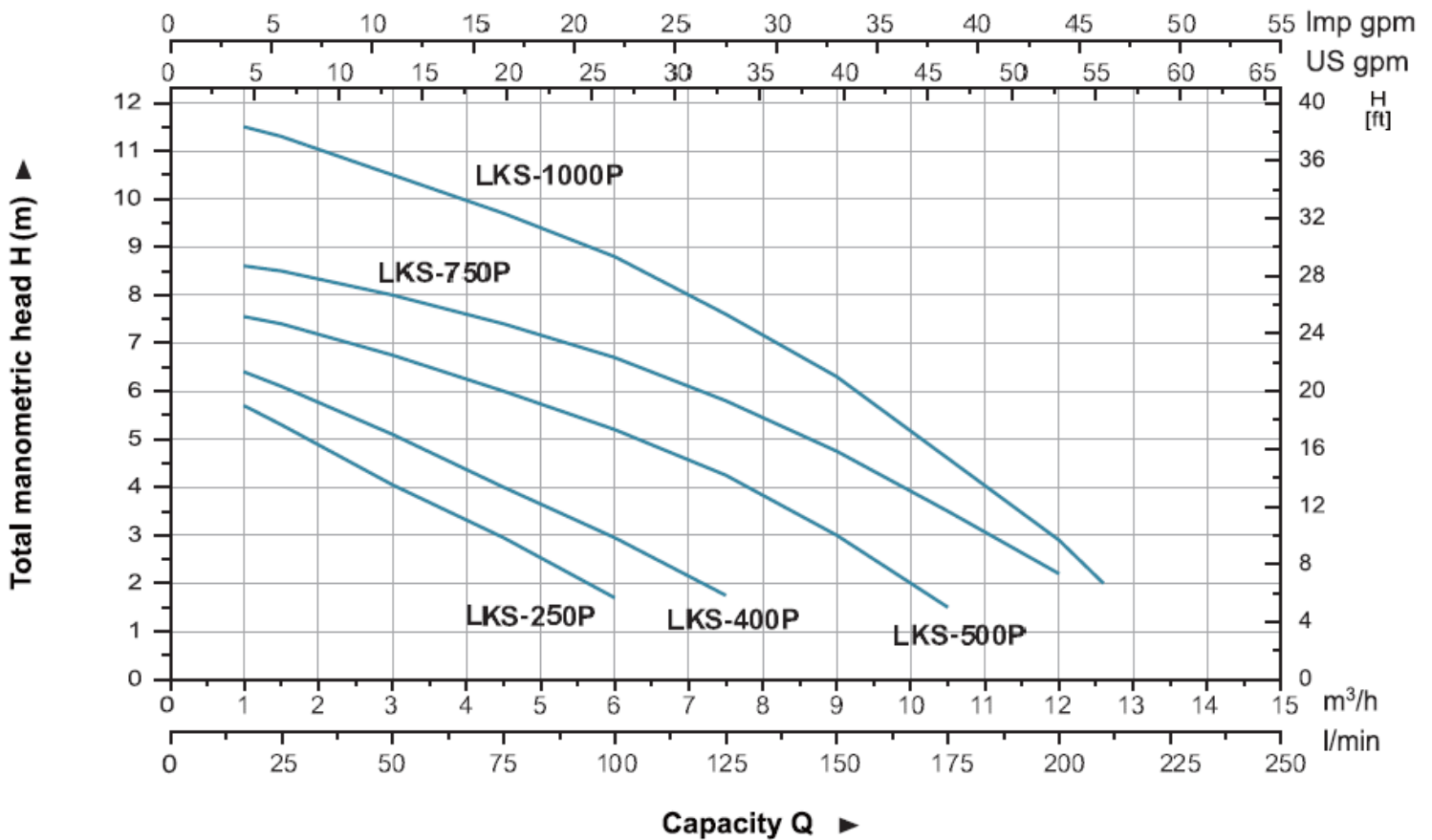
- Extensive use for two outlets
- Float switch ensures automatic cut-in & cut-out
- Max.liquid temperature: +35'C
- Max.immersion depth: 7m
- Max.diameter of particle: 5mm

# Motor

- Motor with aluminum winding
- Built-in thermal protector
- Insulation class: F
- Protection class: IPX8



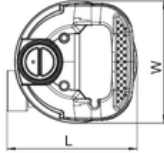
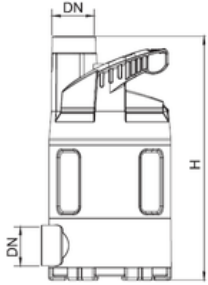
# Hydraulic Performance Curves



## Technical Data

MODEL	POWER		Q ( $m^3/h$ )	0.9	1.5	3	4.5	6	7.5	9	10.5	12	12.6
	W	HP	Q (l/min)	15	25	50	75	100	125	150	175	200	210
LKS-250P	250	0.3	H (m)	5.8	5.3	4.1	3	1.7	-	-	-	-	-
LKS-400P	400	0.5		6.5	6.1	5.1	4	3	1.8	-	-	-	-
LKS-500P	500	0.7		7.6	7.4	6.8	6	5.2	4.3	3	1.5	-	-
LKS-750P	750	1		8.7	8.5	8	7.4	6.7	5.8	4.8	3.5	2.2	-
LKS-1000P	1000	1.3		11.6	11.3	10.5	9.7	8.8	7.6	6.3	4.6	2.9	2

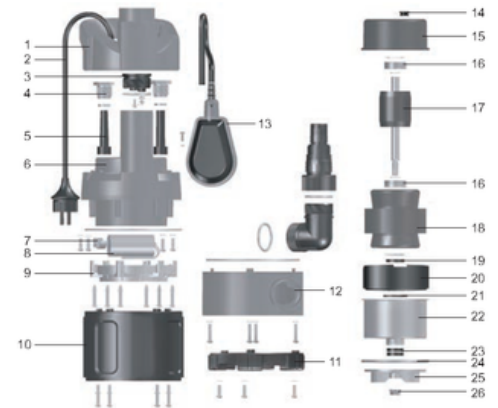
# Dimensions



Model	DN	L (mm)	W (mm)	H (mm)
LKS-250P	32	157	148	295
LKS-400P		157	148	295
LKS-500P		157	148	316
LKS-750P		157	148	316
LKS-1000P		157	148	353

## Materials Table

No.	Part	Material	No.	Part	Material
1	Handle	PP	14	Wire jacket	NBR
2	Cable	Rubber	15	Upper cover	
3	Plug	PP	16	Bearing	
4	Nut	PP	17	Rotor	
5	Cable jacket	EPDM	18	Stator	
6	Roof	PP	19	Lip seal	
7	Capacitor clip	PC/ABS	20	Bearing seat	ZL102
8	Capacitor		21	O-ring	NBR
9	Retainer ring	PP	22	Stator cover	Steel
10	Pump body	PP	23	Lip seal	
11	Base plate	PP	24	O-ring	NBR
12	Base	PP	25	Impeller	PA6
13	Float switch	PP	26	Nut	Stainless steel



## Packaging Information



Model	GW (Kgs)	L (mm)	W (mm)	H (mm)	Quantity (PCS/20'TEU)
LKS-250P	4.4	210	160	330	2064
LKS-400P	4.6	210	160	330	2064
LKS-500P	5.2	210	160	330	2064
LKS-750P	6	210	160	330	2064
LKS-1000P	6.4	210	160	370	1720



**+27 62 375 5088**



**+27 65 321 5803**



**<https://www.thewatersolarcompany.co.za/>**



**<https://maps.app.goo.gl/MBR2LMW3T6f9TtHV9>**



**<https://www.facebook.com/watersolarcompany>**



**<https://www.youtube.com/@TheWaterSolarCompany/>**



**<https://www.instagram.com/watersolarcompany2023/>**