



# 4" DC Solar Pump Range



## Product Catalogue

# 4" DC Only Solar Pump 4DP5-48-48-600

## Applications

The borehole water supply system can meet domestic, gardening, and irrigation needs.

### Technical Data

Outlet Size : 1&1/4" (32mm)

Equip with solar Panels (not included) only  
or Solar panels with battery (Not included)

Optimum Input Voltage : 48V(DC) (30V to  
105V DC)

Power : 600W

Max Flow : 5m<sup>3</sup>/Hour

Max Head : 48m

Automatic Inverter  
control box included  
Pumps are designed by  
casing stressed NEMA  
Dimension standards  
Curve tolerance  
according to ISO 9906

Warranty: 1 year  
(According to our  
general sales  
conditions)

### Operating Conditions

Maximum fluid temperature up to  
+35°C

Maximum sand content: 0.25%

Minimum well diameter: 4" (100mm)

4 x 265W

Solar Panels

Max Power: 265W

S/O Current: 8.7A

O/C Voltage: 36.6V

Max power I = 7.68A

Max Power V = 30.6V

4 x 330W

Solar Panels

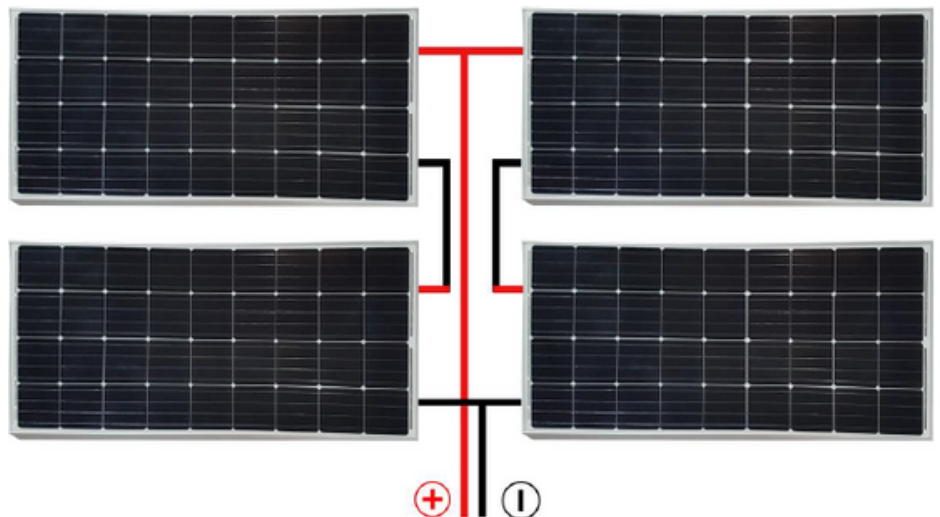
Max Power: 330W

S/O Current: 9.33A

O/C Voltage: 45.64V

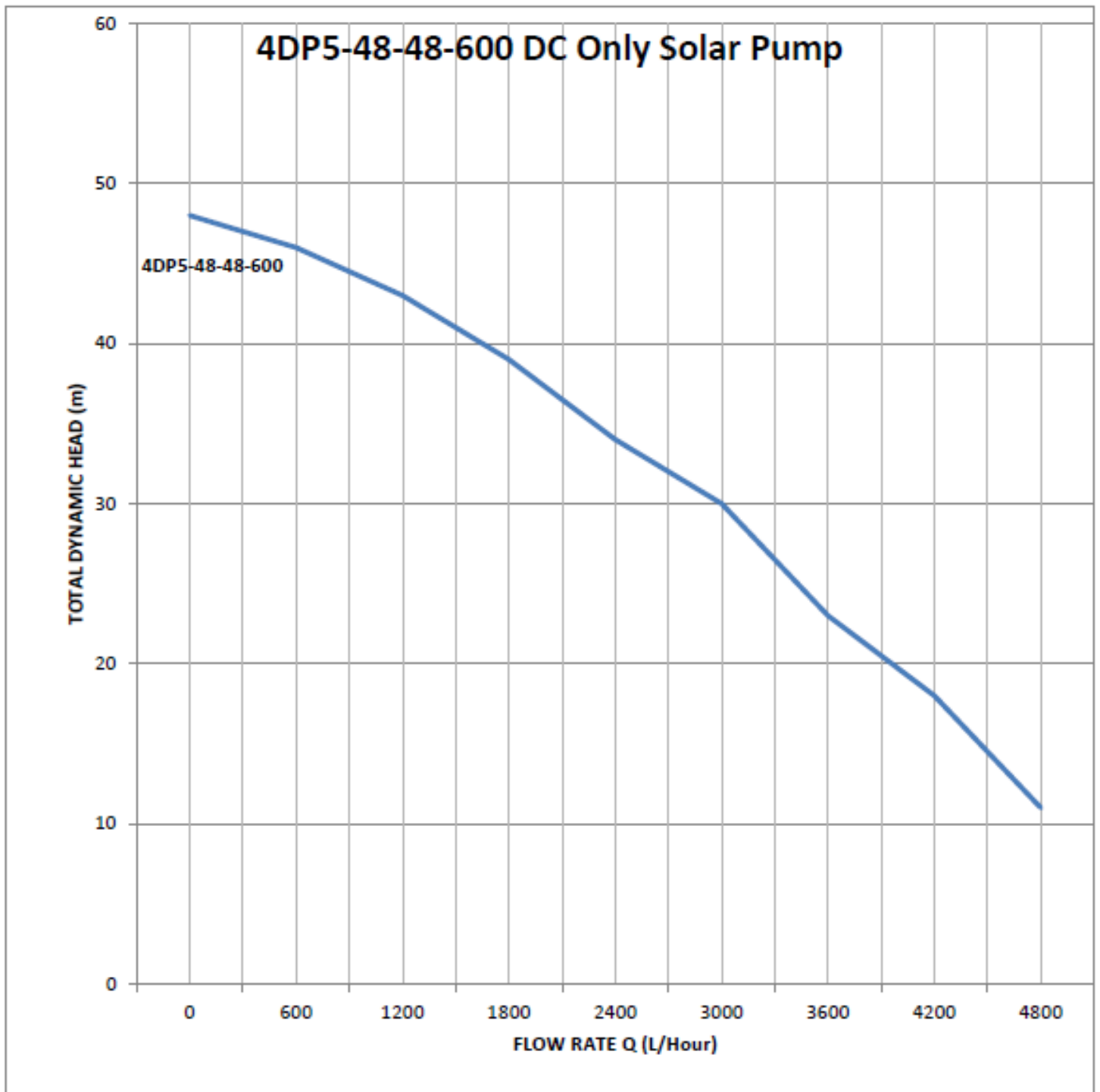
Max power I = 7.15A

Max Power V = 34.28V



# Performance Curve

Model	Motor Power		Delivery N @ 2850 r/min									
	KW	VOLTS	Q	M3/h	0.6	1.2	1.8	2.4	3	3.6	4.2	4.8
4" DC SOLAR				L/h	600	1200	1800	2400	3000	3600	4200	4800
4DP5-48-48-600	0.6	48V	H(m)		46	43	39	34	30	23	18	11



# 4" DC Only Solar Pump 4DP5-65-48-800

## Applications

The borehole water supply system is capable of fulfilling various water demands including domestic use, gardening, and irrigation.

### Technical Data

Outlet Size : 1&1/4" (32mm)

Equip with solar Panels (not included) only  
or Solar panels with battery (Not included)

Optimum Input Voltage : 48V(DC) (30V to  
105V DC)

Power : 800W

Max Flow : 5m<sup>3</sup>/Hour

Max Head : 65m

Automatic Inverter  
control box included  
Pumps are designed by  
casing stressed NEMA  
Dimension standards  
Curve tolerance  
according to ISO 9906

Warranty: 1 year  
(According to our  
general sales  
conditions)

### Operating Conditions

Maximum fluid temperature up to  
+35°C

Maximum sand content: 0.25%

Minimum well diameter: 4" (100mm)

4 x 265W

Solar Panels

Max Power: 265W

S/O Current: 8.7A

O/C Voltage: 36.6V

Max power I = 7.68A

Max Power V = 30.6V

4 x 330W

Solar Panels

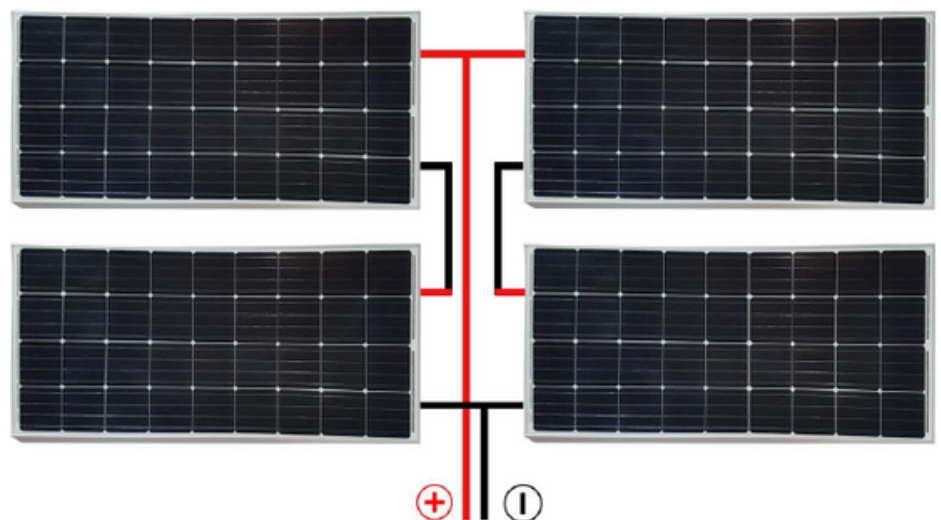
Max Power: 330W

S/O Current: 9.33A

O/C Voltage: 45.64V

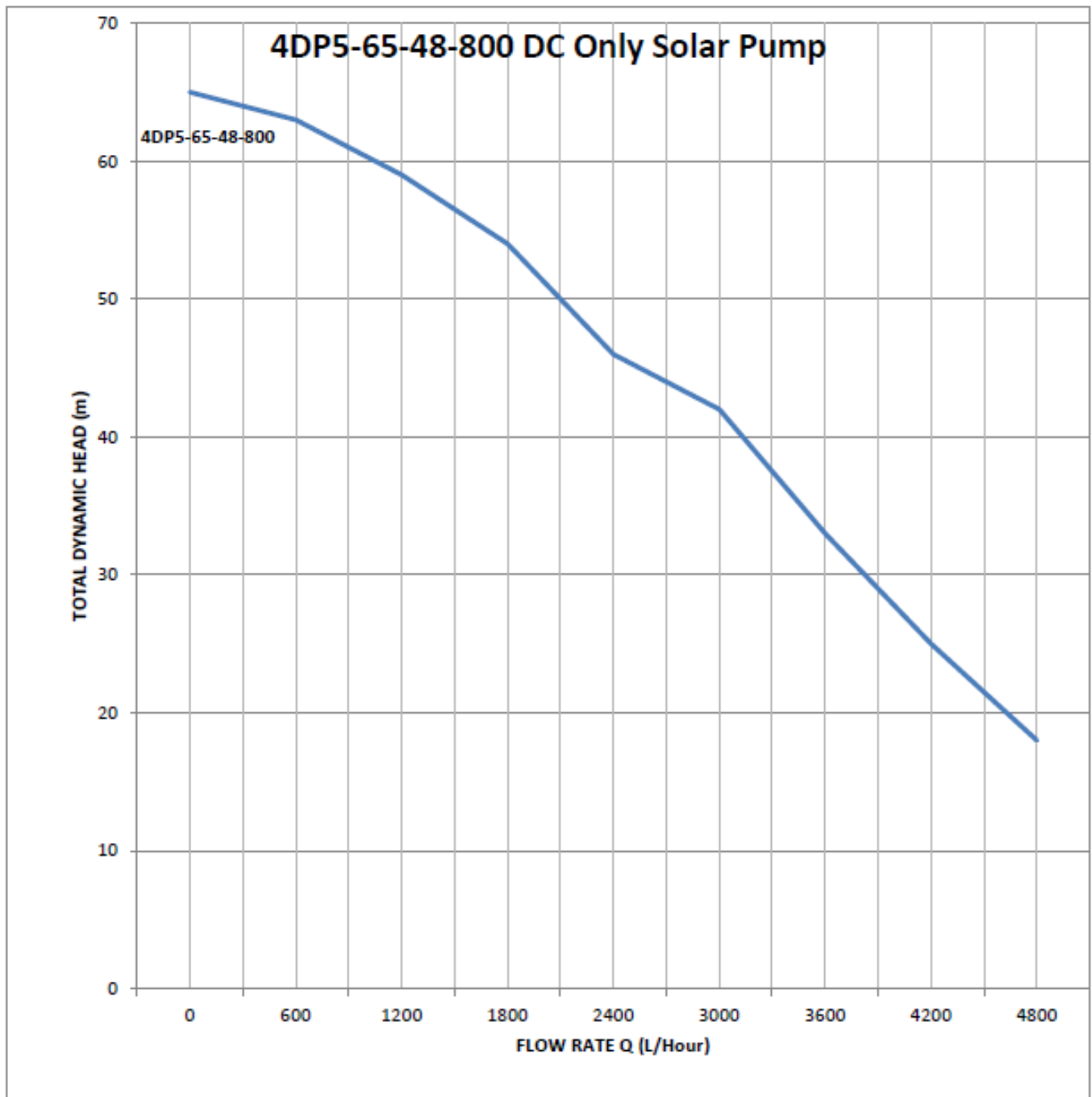
Max power I = 7.15A

Max Power V = 34.28V



# Performance Curve

Model	Motor Power		Delivery N @ 2850 r/min									
	KW	VOLTS	Q	M3/h	0.6	1.2	1.8	2.4	3	3.6	4.2	4.8
4" DC SOLAR				L/h	600	1200	1800	2400	3000	3600	4200	4800
4DP5-65-48-800	0.8	48V	H(m)		63	59	54	46	42	33	25	18



# 4" DC Only Solar Pump 4DP5-100-110-1100

## Applications

The borehole water supply system can meet domestic, gardening, and irrigation needs.

### Technical Data

Outlet Size : 1&1/4" (32mm)

Equip with solar Panels (not included) only or Solar panels with battery (Not included)

Optimum Input Voltage : 110V(DC) (70V to 110V DC)

Power : 1100W

Max Flow : 5m<sup>3</sup>/Hour

Max Head : 100m

Automatic Inverter control box included  
Pumps are designed by casing stressed NEMA Dimension standards  
Curve tolerance according to ISO 9906

Warranty: 1 year  
(According to our general sales conditions)

### Operating Conditions

Maximum fluid temperature up to +35°C

Maximum sand content: 0.25%

Minimum well diameter: 4" (100mm)

6 x 265W

Solar Panels

Max Power: 265W

S/O Current: 8.7A

O/C Voltage: 36.6V

Max power I = 7.68A

Max Power V = 30.6V

6 x 330W

Solar Panels

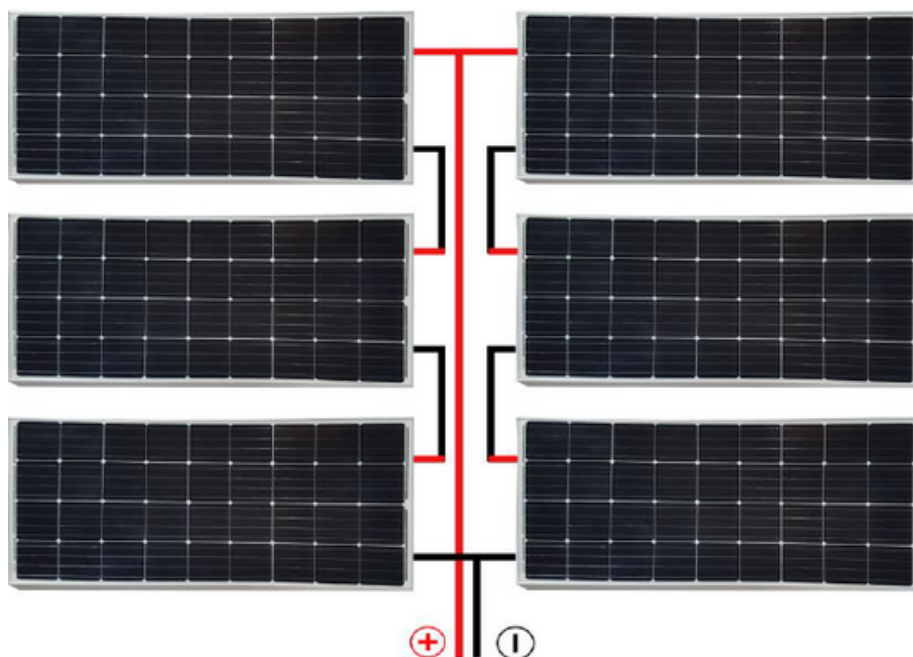
Max Power: 330W

S/O Current: 9.33A

O/C Voltage: 45.64V

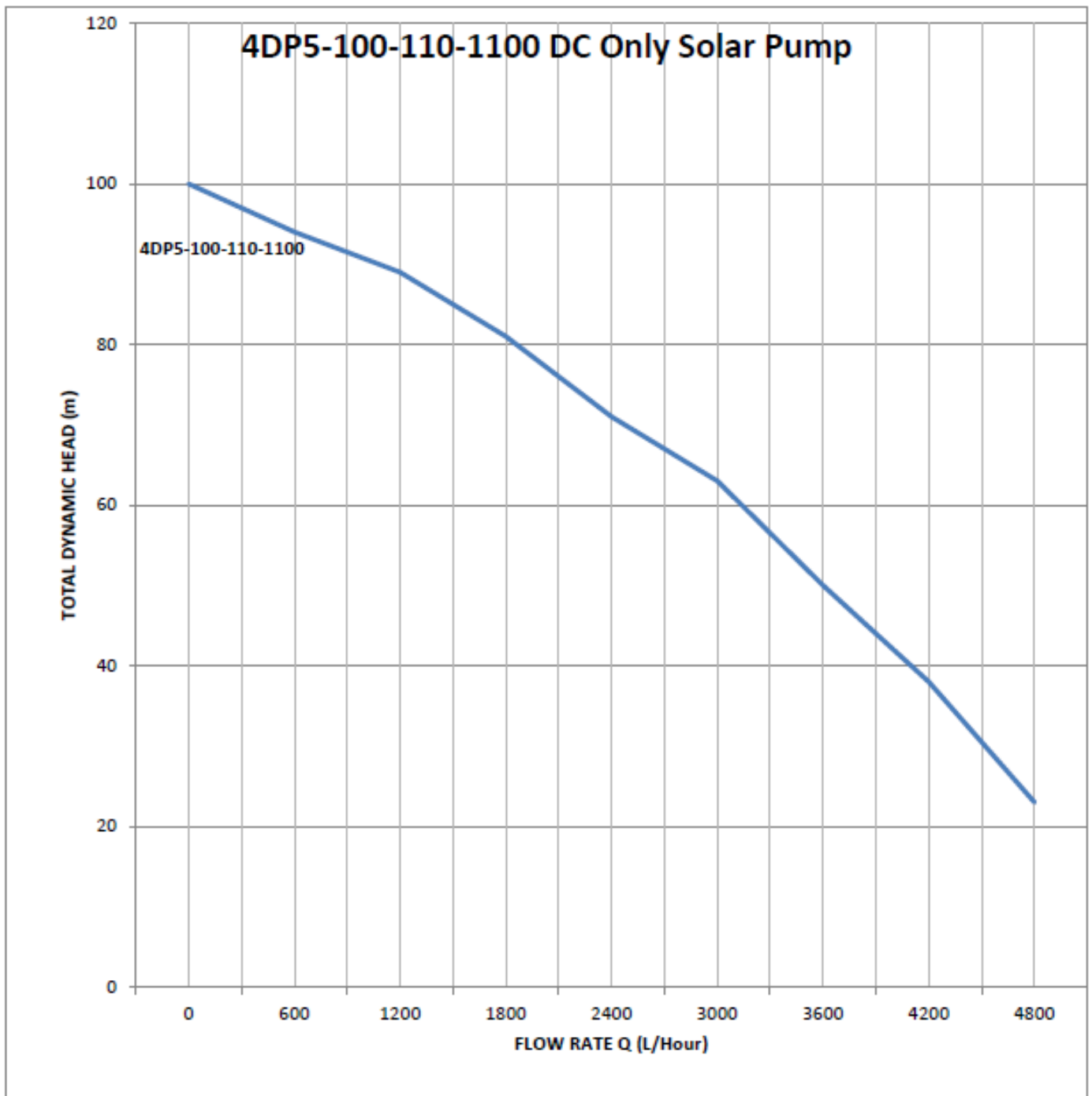
Max power I = 7.15A

Max Power V = 34.28V



# Performance Curve

Model	Motor Power		Delivery N @ 2850 r/min									
	KW	VOLTS	Q	M3/h L/h	0.6	1.2	1.8	2.4	3	3.6	4.2	4.8
4DP5-100-110-1100	1.1	110V	H(m)		94	89	81	71	53	50	38	23





# 4" DC Only Solar Pump 4DP5-128-110-1300

## Applications

The borehole water supply system is capable of fulfilling various water demands including domestic use, gardening, and irrigation.

### Technical Data

Outlet Size : 1&1/4" (32mm)

Equip with solar Panels (not included) only or Solar panels with battery (Not included)

Optimum Input Voltage :

110V(DC) (70V to 110V DC)

Power : 1300W

Max Flow : 5m<sup>3</sup>/Hour

Max Head : 128m

Automatic Inverter control box included  
Pumps are designed by casing stressed NEMA Dimension standards  
Curve tolerance according to ISO 9906

Warranty: 1 year  
(According to our general sales conditions)

### Operating Conditions

Maximum fluid temperature up to +35°C

Maximum sand content: 0.25%

Minimum well diameter: 4" (100mm)

8 x 265W

Solar Panels

Max Power: 265W

S/O Current: 8.7A

O/C Voltage: 36.6V

Max power I = 7.68A

Max Power V = 30.6V

8 x 330W

Solar Panels

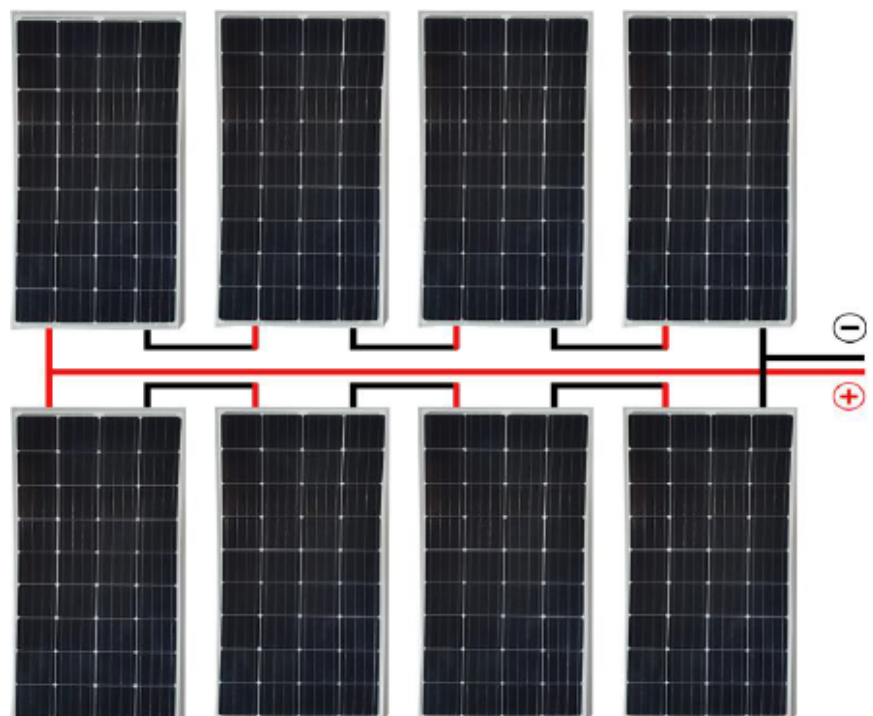
Max Power: 330W

S/O Current: 9.33A

O/C Voltage: 45.64V

Max power I = 7.15A

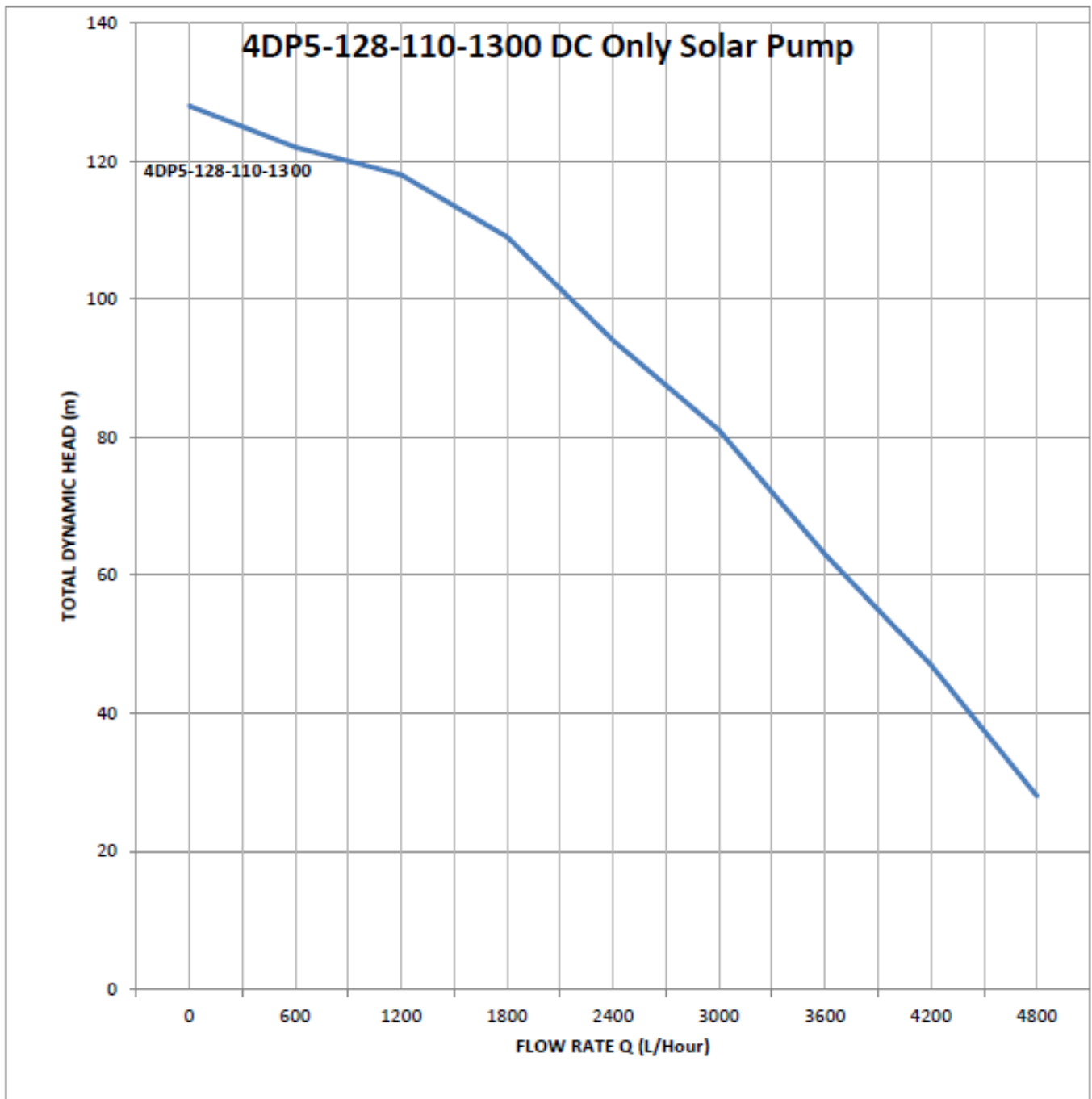
Max Power V = 34.28V





# Performance Curve

Model	Motor Power		Delivery N @ 2850 r/min									
	KW	VOLTS	Q	M3/h	0.6	1.2	1.8	2.4	3	3.6	4.2	4.8
4" DC SOLAR				L/h	600	1200	1800	2400	3000	3600	4200	4800
4DP5-128-110-1300	1.3	110V	H(m)		122	118	109	94	81	63	47	28





**+27 62 375 5088**



**+27 65 321 5803**



<https://www.thewatersolarcompany.co.za/>



<https://maps.app.goo.gl/MBR2LMW3T6f9TtHV9>



<https://www.facebook.com/watersolarcompany>



<https://www.youtube.com/@TheWaterSolarCompany/>



<https://www.instagram.com/watersolarcompany2023/>